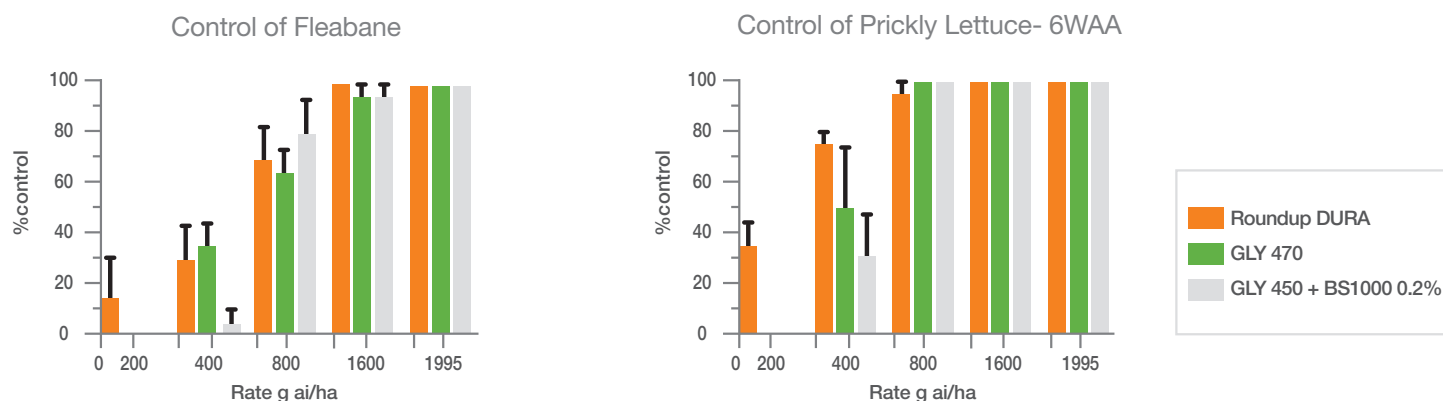


Roundup DURA Herbicide is a 520g/L glyphosate with a built in Monsanto proprietary surfactant. Recent research has shown Roundup DURA outperforming other glyphosate formulations on a number of summer* and winter** weed species.

Summer Weeds



Weed Size at time of treatment: 5-8cm, Water Rate: 100L/ha, Nozzle: Tee-Jett 110-01

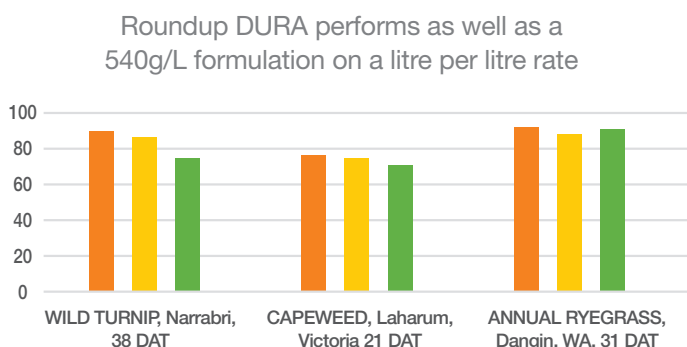
Trials conducted on Fleabane, Prickly Lettuce and Wild Oats highlighted the performance of Roundup DURA compared to other formulations commonly used in the summer. Even when 450g/L formulations were used with additional wetter, the proprietary in-built surfactant system in Roundup DURA is still shown to be driving superior control. (Measurements taken 6 WAT).

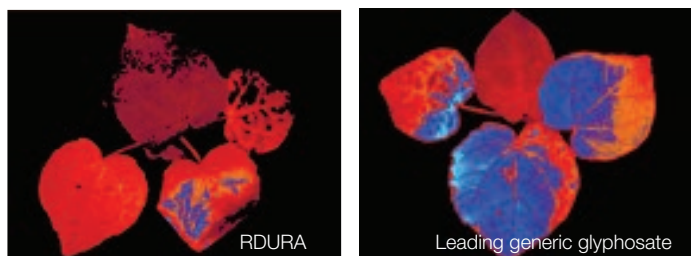
Glyphosate should be used as part of an Integrated Weed Management (IWM) approach. Roundup DURA is highly compatible with common summer tank mixes, including Estericide® Xtra 680, Sharpen® WG, and GoalTender™. For a full list visit sinochem.com.au.

Winter Weeds

In numerous autumn/winter weed trials Roundup DURA has performed as well as 540g/L glyphosates even on a litre per litre basis. This demonstrates that the surfactant technology in the 520 g/L product Roundup DURA drives performance equivalent to the 540 g/L products tested.

Roundup DURA is also highly compatible with other commonly used pre-plant herbicides such as trifluralin, atrazine, Avadex® Xtra, and Boxer Gold®.





The proprietary surfactant system in Roundup DURA allows the herbicide to rapidly penetrate and quickly translocate within the leaves for fast and effective control. Fluorescence imagery of Velvet Leaf 5 DAT (800g ai/ha) shows Roundup DURA translocates much more efficiently compared to competitors.

Features of Roundup DURA

Built-in surfactant

Roundup DURA contains a new-age proprietary surfactant delivering class-leading performance.

Highly compatible

Roundup DURA is highly compatible with common tank mix partners. Refer to label for more information.

Rapid Turnaround

1-hour time to sow label claim means Roundup DURA can be sprayed just ahead of the seeder.

Rainfastness

Featuring a 1-hour rainfastness, Roundup DURA can be used ahead over rain with confidence.

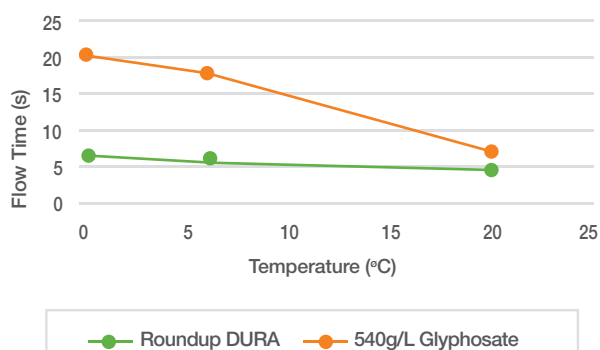
High-flow formulation

Compared to other high-load formulations Roundup DURA maintains a fast flow rate even at 0°C.

Perfect Double Knock Partner

Roundup DURA is a great option when doing a double knock with paraquat prior to seeding. Incorporating a double knock into your IWM strategy best practice to maximise weed control. For more information regarding Double Knock please refer to our Tech Note featuring research from Dr Chris Preston.

Flowability



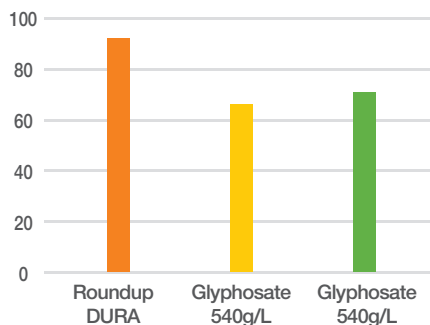
The graph above shows time taken for 150mL of product to flow through a 7mm funnel at varying temperatures.

Problem with Wild Oats?

Roundup DURA has been very successful in controlling Wild Oats. Repeated experiments in pots and in-field consistently show Roundup DURA outperforming competitors.

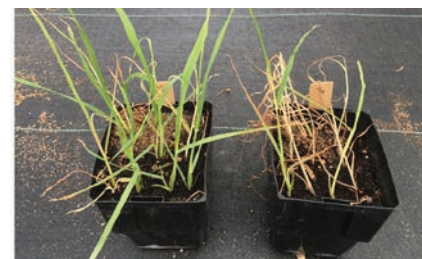
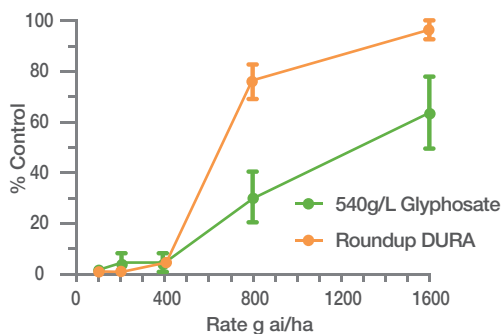
Target 100% weed control and avoid the development of resistance by using products with proven performance on tough-to-control weeds.

% Control Wild Oats in Dargin, WA 31 DAT (540g ai/ha)



Weed Stage: 3 Leaf Water Rate: 100L/ha
Nozzle: Tee-Jett 110-

Wild Oats % Control



Wild Oat pots treated with Roundup DURA (right) showing superior control over a market-leading glyphosate 540g/L (left). Product was applied at the 3 leaf stage, photos taken 14 DAA.

