

Roundup DURA® Herbicide

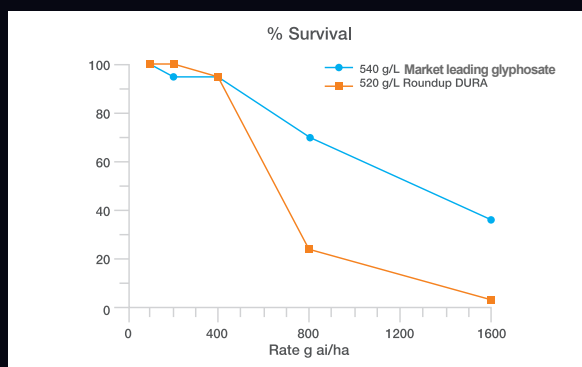
TECH NOTE

Roundup DURA® is a potassium salt glyphosate optimised at 520 g/L with a new generation proprietary in-built surfactant system. This new Roundup formulation is available for use in pre-plant and fallow situations, and as a pre-harvest aid. Additional benefits include;

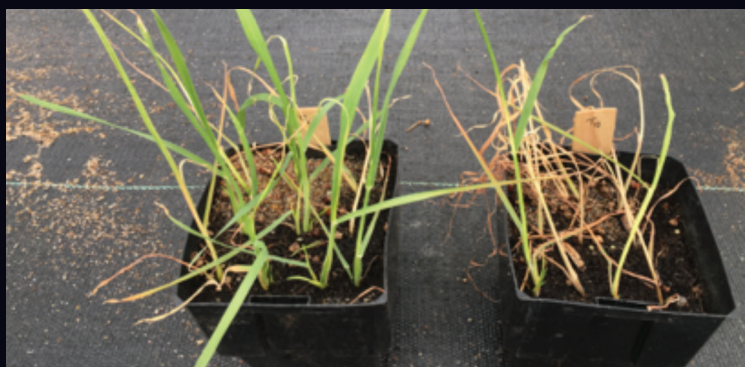
- Proprietary surfactant delivering class-leading performance
- 1-hour rainfastness label claim
- 1-hour time to sowing
- High-flow formulation even in cool conditions
- Compatible with a wide range of tank mixes

Class-leading performance

Roundup DURA has been independently tested on a range of common weeds in the Australian broadacre market. The proprietary surfactant system in Roundup DURA delivered class-leading performance against a range of 540 g/L competitor products.



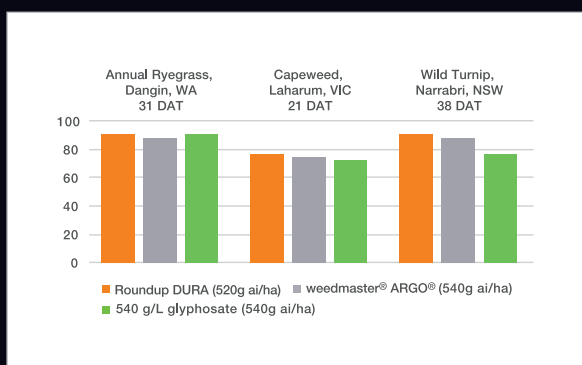
Pot trials conducted by Dr. Peter Boutsalis, Plant Science Consulting, 2017. Product was applied to Wild Oats at the 3 leaf stage, and measurements taken at 24 DAA.



Left: Market leading 540 g/L glyphosate 800g ai/ha. Right: Roundup DURA 800g ai/ha. Photos taken 14 DAA.

Powerful surfactant

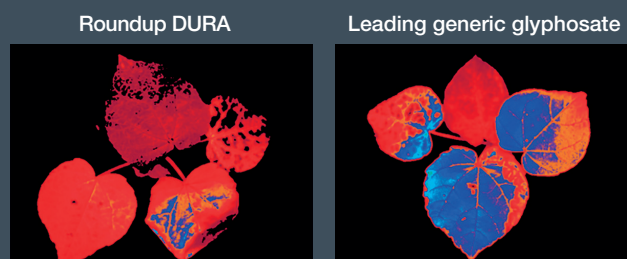
Weed efficacy trials demonstrate that the surfactant technology in the 520 g/L product Roundup DURA drives performance equivalent to the 540 g/L products tested.



Weed efficacy comparison of Roundup DURA® to competitor 540 g/L glyphosate products in three different weed species and geographies. Field trials conducted by Eurofins, 2016.

Rapid translocation

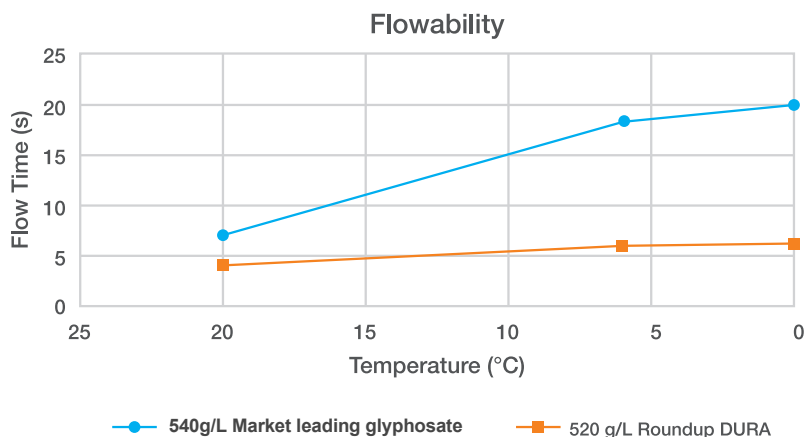
The proprietary surfactant system in Roundup DURA allows the herbicide to rapidly penetrate and quickly translocate within the leaves of weeds for fast and effective control. In the images below fluorescence imaging was used to show translocation in Velvet Leaf five days after treatment with Roundup DURA (left) and a leading generic glyphosate (right). Red fluorescence indicates a higher level of injury. The effective rate used was 800 grams of active ingredient per hectare.



Fluorescence imaging of Roundup DURA and a competitor product five days after treatment in Velvet Leaf. Conducted by Monsanto, 2016.

High-flow formulation

Temperatures at pre-plant can reach as low as 0°C. Where cold conditions can restrict the flowability of some high-load glyphosates, Roundup DURA's unique high-flow formulation allows the product to be pumped easily in a wide range of conditions. The graph below compares the time taken for 150mL of product to flow through a 7mm funnel at varying temperatures, clearly showing Roundup DURA maintaining a fast flow rate even at 0°C.



Compatibility

Compatibility was tested by an independent laboratory using jar tests and spray rig simulation equipment. Based on the results, Roundup DURA is compatible with the common tank mix products listed in the table below.

Herbicide	Active Ingredient	Rate
Statesman™ 720 Herbicide	720 g/L 2,4-D Amine	1.5 L/ha
Amicide® Advance 700	700 g/L 2,4-D Amine	1.2 L/ha
Amicide® 625	625 g/L 2,4-D Amine	1.7 L/ha
Estercide® Xtra 680	680 g/L 2,4-D Ester	0.9 L/ha
Comet® 400	400 g/L Fluroxypyr	0.7 L/ha
Starane™ Advanced	333 g/L Fluroxypyr	0.9 L/ha
Sharpen® WG Herbicide	700 g/kg Saflufenacil	26 g/ha
KELPIE® A-ZINE 900 DF Herbicide	900 g/kg Atrazine	1.1 kg/ha
TriflurX® + KELPIE® A-ZINE 900 DF Herbicide	480 g/L Trifluralin 900 g/kg Atrazine	2.0 L/ha 1.1 kg/ha
TriflurX® + Avadex® Xtra	480 g/L Trifluralin 500 g/L Triallate	2.0 L/ha 2.0 L/ha
Boxer Gold®	800 g/L Prosulfocarb 120 g/L S-Metolachlor	2.5 L/ha

For a full list of compatible products consult the product label or talk to your local Sinochem Area Sales Manager.

